

Overview

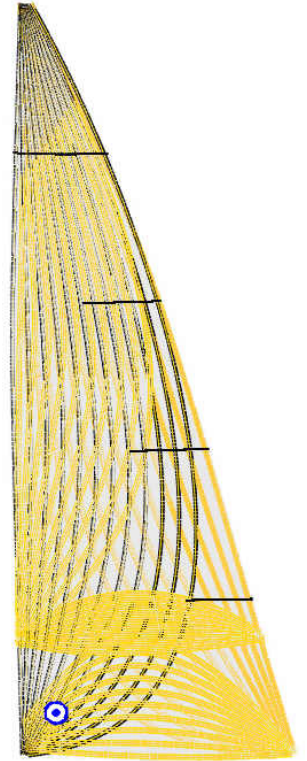
Our Vectrix Membrane sails are designed and built around SMAR-Azure software and technology which allows Neil Pryde to ‘string’ the flying membrane of the CAD-designed sails with a variety of yarn types and in patterns that match the loads generated throughout a particular sail type. This technology allows us to reduce the yarn density in low load areas of the sail and putting a higher yarn density only where it needs to be. This careful engineering result

in lighter, stronger sails that have less deformation of the design shapes than conventional constructed sails.



This technology is seamlessly integrated with our Autometrix 3-D and AzureProject software, which allows the latest shapes and design philosophies of our designers to flow into this new technology. Vectrix sails are made using the latest Aramid and carbon fibers, strung on to U.V. stable films and sealed using two-sided laminators and ovens to produce exceptional film-to-film bonds. This construction will not delaminate, yet have an excellent hand or feel.

As with all Neil Pryde Premier Plus racing sails, these sails are fitted with draft stripes, tell tails, insignias, Vectran leechline, cunningham...all the necessary items to race.



String or FiberPath Layout

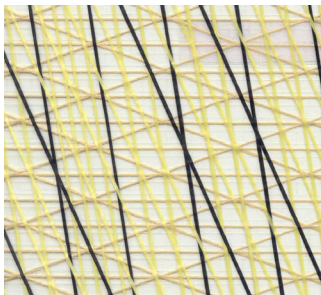
Contact the Neil Pryde Agent nearest you for information regarding these products.

www.neilprydesails.com

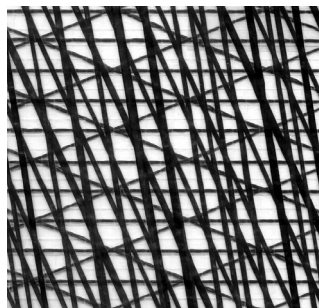
Yarn Types:

Yarns come in different types and combinations depending on boat size and application. We utilize primary yarns and combinations.

- Aramid
- Technora /Aramid
- Carbon / Technora



Aramid/Technora



Carbon/Technora



Aramid